

IntelliPDF CURVES^{2.0}

Plug-in for Adobe Acrobat

User Guide

www.intellipdf.com



END-USER LICENSE AGREEMENT

IMPORTANT - READ CAREFULLY:

This End-User License Agreement ("EULA") is a legal agreement between you (either an individual or a single entity) and IntelliPDF, Inc. for the software product identified above, which includes computer software, and may include associated media, printed materials, and "online" or electronic documentation ("SOFTWARE PRODUCT"). The SOFTWARE PRODUCT also includes any updates and supplements to the original SOFTWARE PRODUCT provided to you by IntelliPDF, Inc. Any software provided along with the SOFTWARE PRODUCT that is associated with a separate end-user license agreement is licensed to you under the terms of that license agreement. By installing, copying, downloading, accessing, or otherwise using the SOFTWARE PRODUCT, you agree to be bound by the terms of this EULA. If you do not agree to the terms of this EULA, do not install or use the SOFTWARE PRODUCT; you may, however, return it to your place of purchase for a full refund.

SOFTWARE PRODUCT LICENSE

The SOFTWARE PRODUCT is protected by copyright laws and international copyright treaties, as well as other intellectual property laws and treaties. The SOFTWARE PRODUCT is licensed, not sold.

1. GRANT OF LICENSE

This EULA grants you the following rights: Software. You may install, use, access, display, run, or otherwise interact with ("RUN") one copy of the SOFTWARE PRODUCT, or any prior version for the same operating system, on a single computer, workstation, terminal, handheld PC, pager, "smart phone," or other digital electronic device ("COMPUTER").

- **Storage/Network Use.** You may also store or install a copy of the SOFTWARE PRODUCT on a storage device, such as a network server, used only to RUN the SOFTWARE PRODUCT on your other COMPUTERS over an internal network; however, you must acquire and dedicate a license for each separate COMPUTER on which the SOFTWARE PRODUCT is RUN from the storage device. A license for the SOFTWARE PRODUCT may not be shared or used concurrently on different COMPUTERS.
- **Not for Resale Software.** If the SOFTWARE PRODUCT is labeled "Not For Resale" or "NFR," then, notwithstanding other sections of this EULA, your use of the SOFTWARE PRODUCT is limited to use for demonstration, test, or evaluation purposes and you may not resell, or otherwise transfer for value, the SOFTWARE PRODUCT.
- **Limitations on Reverse Engineering, Decompilation, and Disassembly.** You may not reverse engineer, decompile, or disassemble the SOFTWARE PRODUCT.
- **Separation of Components.** The SOFTWARE PRODUCT is licensed as a single product. Its component parts may not be separated for use on more than one COMPUTER.
- **Trademarks.** This EULA does not grant you any rights in connection with any trademarks or service marks of IntelliPDF, Inc.
- **Support Services.** IntelliPDF, Inc. may provide you with the support services related to the SOFTWARE PRODUCT ("Support Services"). Any supplemental software code provided to you as part of the Support Services shall be considered part of the SOFTWARE PRODUCT and subject to the terms and conditions of this EULA.
- **Software Transfer.** The initial licensee of the SOFTWARE PRODUCT may make a one-time permanent transfer of this EULA and SOFTWARE PRODUCT only directly to an end user. This transfer must include all of the SOFTWARE PRODUCT (including all component parts, the media and printed materials, any upgrades, this EULA, and, if applicable, the Certificate of Authenticity). Such transfer may not be by way of consignment or any other indirect transfer. The transferee of such one-time transfer must agree to comply with the terms of this EULA, including the obligation not to further transfer this EULA and SOFTWARE PRODUCT.
- **Termination.** Without prejudice to any other rights, IntelliPDF, Inc. may terminate this EULA if you fail to comply with the terms and conditions of this EULA. In such event, you must destroy all copies of the SOFTWARE PRODUCT and all of its component parts.

2. UPGRADES

If the SOFTWARE PRODUCT is labeled as an upgrade, you must be properly licensed to use a product identified by IntelliPDF, Inc. as being eligible for the upgrade in order to use the SOFTWARE PRODUCT. A SOFTWARE PRODUCT labeled as an upgrade replaces and/or supplements (and may disable) the product that formed the basis for your eligibility for the upgrade. You may use the resulting upgraded product only in accordance with the terms of this EULA.

3. COPYRIGHT

All title and copyrights in and to the SOFTWARE PRODUCT (including but not limited to any images, photographs, animations, video, audio, music, text, and "applets" incorporated into the SOFTWARE PRODUCT), the accompanying printed materials, and any copies of the SOFTWARE PRODUCT are owned by IntelliPDF, Inc. All title and intellectual property rights in and to the content that may be accessed through use of the SOFTWARE PRODUCT is the property of the respective content owner and may be protected by applicable copyright or other intellectual property laws and treaties. This EULA grants you no rights to use such content.

Font rendering is accomplished via the FreeType Library is provided by the FreeType Project. The FreeType Project is copyright (C) 1996-2000 by David Turner, Robert Wilhelm, and Werner Lemberg. All rights reserved except as provided in the FreeType License. Web site: www.freetype.org.

4. BACKUP COPY

After installation of one copy of the SOFTWARE PRODUCT pursuant to this EULA, you may keep the original media on which the SOFTWARE PRODUCT was provided by IntelliPDF, Inc. solely for backup or archival purposes.

TABLE OF CONTENTS

1. GENERAL INFORMATION	3
1.1 OVERVIEW	3
1.2 MINIMUM SYSTEM REQUIREMENTS.....	5
1.3 LIMITATIONS OF INTELLIPDF CURVES 2.0 ...	5
1.4 RESTRICTIONS OF DEMO VERSION.....	5
2. INSTALLATION	6
3. WORKING WITH PLUG-IN	7
3.1 GENERAL CONTROLS	8
3.2 STATISTICS.....	8
3.3 OPTIONS	9
3.4 PREFERENCES	9
3.5 NAVIGATION / CONVERSION	10

1. GENERAL INFORMATION

1.1 OVERVIEW

As of today, Adobe Acrobat PDF file format represents the most universally accepted multi-platform compatible way of storing, transferring, processing, printing and publishing documentation of the web. To comply with this emerging standard, more and more businesses convert their documents into PDF format.

IntelliPDF Curves 2.0 is an Adobe Acrobat plug-in that converts fonts contained in PDF files into curves (or outlines.) The converted document is an exact copy of the original: it retains resolution of the source document during scaling, it contains the same structure, bookmarks, images, etc., the only difference is that the text is displayed without using fonts.

IntelliPDF Curves 2.0 allows you to:

- Create hierarchical reports regarding fonts used in a given document. You can sort these reports by various font-specific parameters (Name, Embedding, Type, Pages, Embeddability, Encoding);
- Select any of the fonts used in a document and highlight only parts of the text that employ that particular font;
- Be flexible in the conversion process: you can convert not only the whole document, but also any selected area of the given text: sentences, paragraphs, pages etc.;
- Convert forms and their data into curves.

There are several advantages of using curve-converted PDF documents:

- **Increased possibilities in editing of the documents;**
- **Trouble free printing of the documents;**
- **Protection from possible font copyright related lawsuits;**
- **Increased security.**

Increased Possibilities in Editing of the Documents

“Missing Type 1 (or TrueType) fonts have been substituted with the default font. Fonts with foreign encodings have been reencoded.” “Text in Type 3 or user defined fonts has been skipped.” Many designers encountered these error messages while trying to edit PDF documents. Converting fonts into curves allows you to edit any document, even documents containing fonts that do not exist on your system. Besides that, it allows you to modify documents with fonts protected from editing without breaking any copyright laws.

Trouble Free Printing of the Documents

People continually encounter problems during printing of the files containing fonts that cannot be recognized by the printer's software. Even superior document format like PDF is

susceptible to the described problem. This is the main reason why majority of printing companies ask their clients to make sure that the submitted documents are converted into curves. It's easy to do if the document was created in Adobe Illustrator, CorelDraw or similar applications. But you will need our plug-in if all you have is a PDF copy of the original document or PDF format is the original format of the document.

One of the biggest problems with electronic files submitted for output is missing fonts. This also holds true for graphics made in illustration programs such as Adobe Illustrator and Macromedia FreeHand. Designing a logo or design with type requires the fonts to be available for the graphic to look and print correctly. Without the font active, another font may be substituted when printing. By converting fonts into curves you will eliminate the above mentioned problems.

Protection from Possible Font Copyright Related Lawsuits

There are numerous PDF documents out there that use fonts illegally: users embedded (knowingly or unknowingly) copyrighted fonts in their documents that they didn't have permissions for. These are potential lawsuits waiting to happen. Adobe ignored font licensing when embedding fonts until Acrobat 4 came out. But only font software is protected by U.S. Copyright law. So by converting fonts into curves you will legally use any font, to be exact font's outlines, that you want to be contained in your document.

"Font Embeddability" is a new parameter that describes an embedding setting for the given font. At this time, there are four possible embedding settings:

Installable embedding allowed;

fonts may be embedded in documents and permanently installed on the remote system;

Editable embedding allowed;

fonts may be embedded in documents, but must only be installed temporarily on the remote system;

Print and preview embedding allowed;

fonts may be embedded in documents, but must only be installed temporarily on the remote system. Documents can only be opened read-only;

Restricted license embedding. No embedding allowed;

fonts may not be embedded in document.

Note:



You can download a program **Font Properties Extension** from Microsoft at: <http://www.microsoft.com/typography/TrueTypeProperty21.mspx> and check your fonts for Embeddability.

Increased Security

Curve conversion prevents the contents of the document from being copied. It's a well known fact that there are workarounds to copy PDF documents protected from being copied, but when the text is converted into curves there's nothing left to copy.

Curve conversion can also protect custom designed fonts or corporate fonts from being extracted from the documents for use by other parties.

1.2 MINIMUM SYSTEM REQUIREMENTS

The IntelliPDF CURVES 2.0 Plug-in requires:

- ☞ Windows-based operating systems
- ☞ Full version of Adobe Acrobat 5.0 and later

1.3 LIMITATIONS OF INTELLIPDF CURVES 2.0

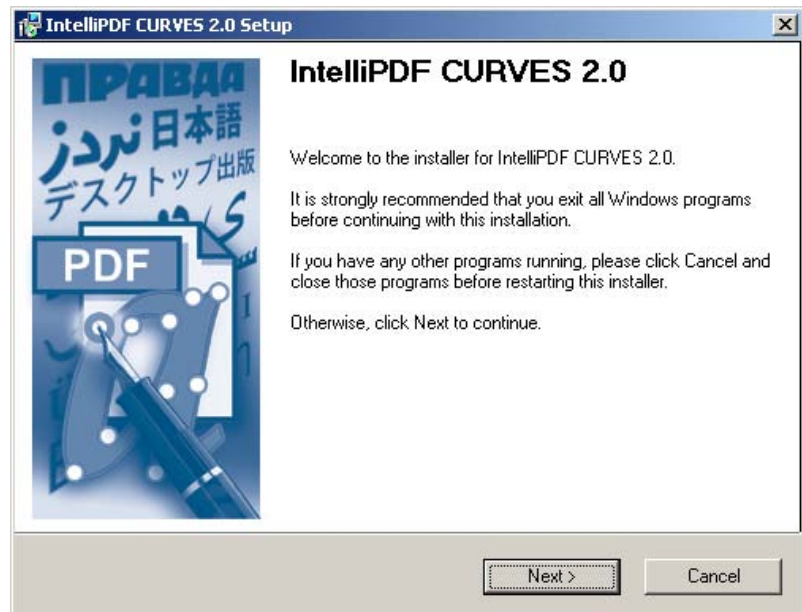
- ☞ The IntelliPDF CURVES 2.0 Plug-in **will not convert secured documents.**
- ☞ The Plug-in **might have problems** converting documents with corrupted page content which is being rejected by Adobe Acrobat editing tools.

1.4 RESTRICTIONS OF DEMO VERSION

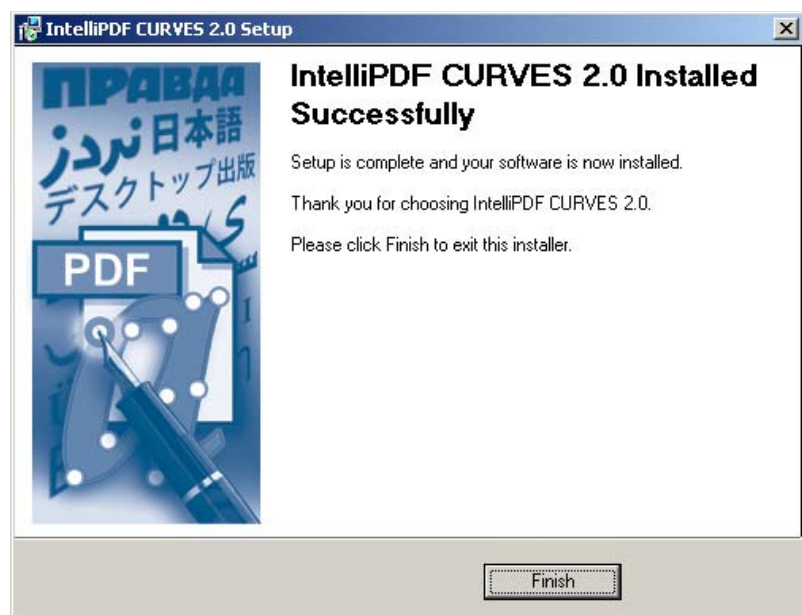
- ☞ Converts only text of the current page of the given document;
- ☞ Converted page is "Demo" watermarked;
- ☞ Converted document is protected from editing.

2. INSTALLATION

Close all running applications. Double click on the Plug-in installation file. The following dialog box will appear.




Follow the instructions. During the installation process of the full version of the Plug-in you will be prompted to enter the serial number. After successful installation process the following dialog will appear.



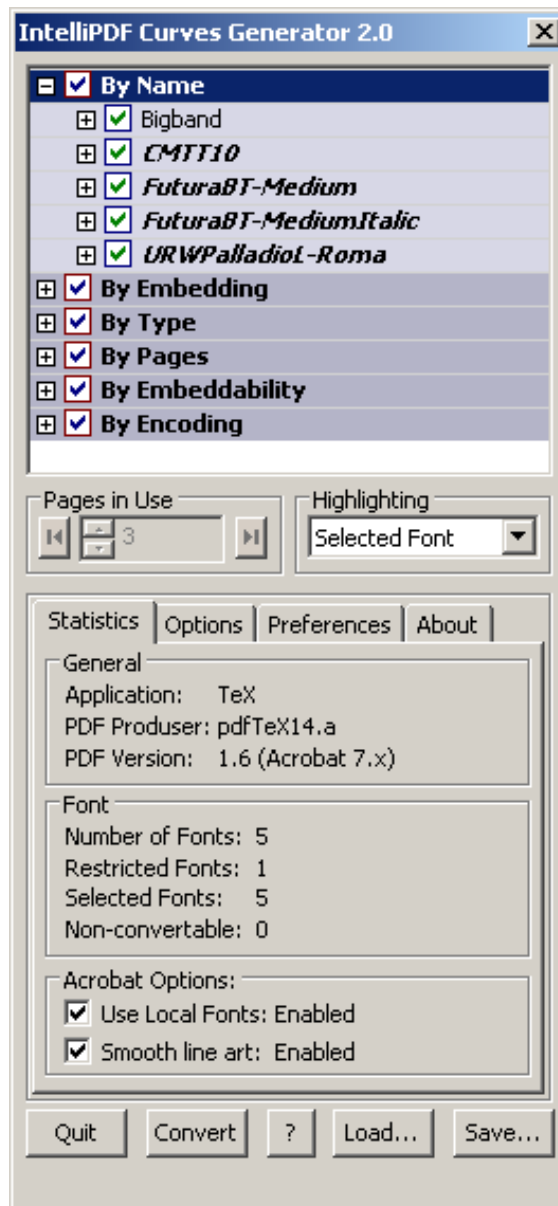
Now you can launch Adobe Acrobat and activate the Plug-in.

3. WORKING WITH PLUG-IN

There are two ways to launch the Plug-in:

- 1) Go to the *Plug-ins* menu and select **IntelliPDF CURVES 2.0**
- 2) Click on the **IntelliPDF CURVES 2.0** icon  on the Toolbar.

You will see a following dialog box:



3.1 GENERAL CONTROLS

Hierarchical list	displays information about the fonts employed in the given document, located at the top of the dialog window. To improve user experience, this list is broken down by the key font parameters:
Name	The list of all fonts sorted by Name;
Embedding	The list of all fonts sorted by the type of embedding;
Type	The list of all fonts sorted by their type, such as: True Type, Type1, Type0, Type3, CIDFonts etc. (See Adobe PDF Reference for more information regarding fonts that can be used in PDF documents);
Pages	The list of all pages and all fonts used in the given page;
Embeddability	The list of all fonts sorted by the type of embeddability;
Encoding	The list of used fonts sorted by the type of encoding (See Adobe PDF Reference for more information about fonts that could be used in PDF documents).
Pages in Use	Displays pages that contain a chosen font. (The parts of these pages that employ the chosen font will be highlighted);
Highlighting	Allows you to adjust the highlight options;
Convert button	Begins conversion process;
Quit button	Closes the Plug-in;
Help button <?>	Opens the User Guide;
Save button	Saves current Plug-in settings as a preset;
Load button	Loads existing presets.

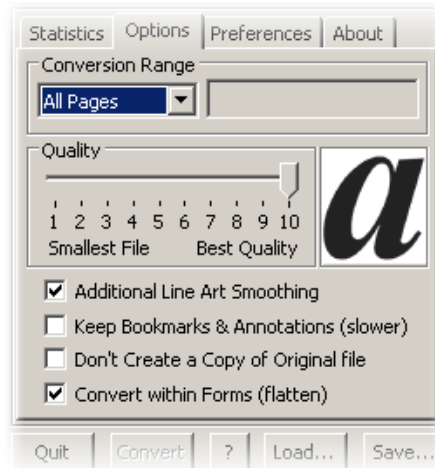
3.2 STATISTICS

Statistics tab shows the information about the original application that was used to create and format the PDF document.

Number of Fonts	Displays the total number of fonts employed in the document;
Restricted Fonts	Displays the number of fonts protected by the copyright law;
Selected Fonts	Displays the total number of fonts chosen for the conversion.
Non-convertible	Displays the total number of fonts that cannot be converted.

Adobe Acrobat options **Use Local Font** and **Smooth line art** to increase convenience of use. They have exactly the same effect as original Adobe Acrobat options.

3.3 OPTIONS



Conversion Range allows you to select pages for the conversion process:

All Pages – converts all pages;

Even – converts only even numbered pages;

Odd – converts only odd numbered pages;

Current – converts the current page;

Pages – converts selected page numbers and/or page number ranges. For example: 1, 2-7, 26, 31.

Selected Area – converts only the selected area of the current page.

Quality slider allows you to select a desired resolution level (1 through 10) for the converted document. The lower the quality - the smaller the size of the file.

Additional Line Art Smoothing allows you to enhance (smooth out) the curves, which will result in a better defined text.

Keep Bookmarks & Annotations preserves all bookmarks and annotations in the converted copy of the document.

Don't Create a Copy of Original file check box doesn't back up the original, all changes are applied to the original file.

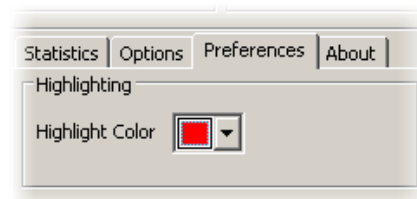
Note:



We still recommend to have/manually create a back up copy of the original file even if **Don't Create a Copy of Original file** is selected.

Convert within Forms check box converts PDF document forms and their data into curves.

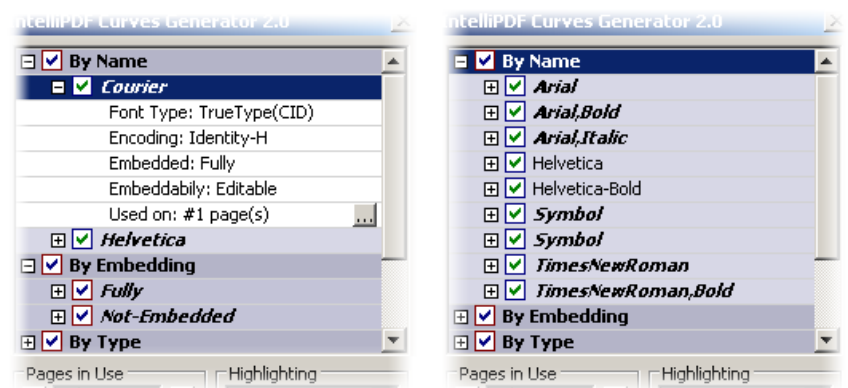
3.4 PREFERENCES



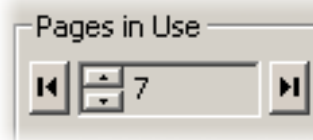
Highlight Color changes the color of the selected font on the page.

3.5 NAVIGATION / CONVERSION

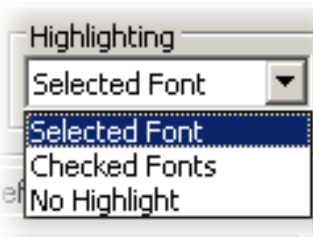
The list of fonts presents you with the wealth of information about them. Fonts contained on the current page will appear in **Bold-Italic**. Clicking on a font that is not marked by **Bold-Italic** will result in displaying a first available page that contains the chosen font. All checked fonts or groups of fonts will be converted.



Page in Use area also shows you pages that employ the selected font. Click on **Page in Use** controls (arrows) to flip through the pages that include the selected font. Left and

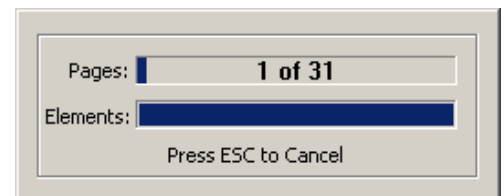


right arrows with vertical bars will bring you respectively to the first and the last pages that use the selected font, up and down arrows act as next page and previous page controls.



Highlighting. If **Selected Font** option is selected, areas of the current page that include the selected font will be outlined by the rectangle. If **Checked Fonts** option is selected, areas of the current pages that include all checked fonts will be outlined by the rectangle.

Click on **Convert** button to start the conversion process. To stop the conversion process press **Esc** button on your keyboard.





IntelliPDF

CURVES ^{2.0}

Plug-in for Adobe Acrobat

Mailing Address:

459 N. Croft Ave,
Los Angeles, CA 90048

Telephone:

(877) 468-5733 (toll free)

E-mail:

info@intellipdf.com

Web site:

<http://www.intellipdf.com>